

A photograph of the Huidamed HD-MZI Surgical Power System in an operating room. The device is a white and grey unit mounted on a metal stand. It features a large touchscreen display showing 'SPEED' and 'IRRIGATION' controls. The background shows a typical surgical suite with various medical equipment and a clean, sterile environment.

# HD-MZI SURGICAL POWER SYSTEM

**Huidamed**®  
*For Neuro, For More*

---

## Multifunctional Console

■ Code: C1702

- Power: 110/220V 50/60Hz
- Touch Screen Control
- Irrigation Flow:  $\geq 10$  ml/min
- Overload protection
- Motor discern and alarm
- Constant speed with torque compensation
- Multifunctional, support perforator, craniotome, high speed drill, endoscopy drill, oscillating saw, reciprocating saw, etc.



## Basic Console

■ Code: C1701

- Power: 110/220V 50/60Hz
- Overload protection
- Motor discern and alarm
- Constant speed with torque compensation
- Support perforator, craniotome, high speed drill



# MOTOR

## Cranial Motor

- Code: C1801
  - Swiss motor inside, Autoclavable
  - Speed: **0~40,000 RPM**
  - Rated Power: 100W    Max Power: 150W
  - Torque: > 25mNm
  - Cable Length: 4m
  - Body Length: 105mm/140mm with bearing tip



## High Speed Motor

- Code: C1802
  - Swiss motor inside, Low noise, Low temperature rise, Autoclavable
  - Speed: **0~60,000 RPM**
  - Rated Power: 60W      Max Power: 80W
  - Torque: > 15mNm
  - Cable Length: 4m
  - Body Length: 105mm/140mm with bearing tip



## High Speed Motor

- Code: C1803
  - Swiss motor inside, Low noise, Low temperature rise, Autoclavable
  - Speed: **0~80,000 RPM**
  - Rated Power: 80W    Max Power: 100W
  - Torque: > 15mNm
  - Cable Length: 4m
  - Body Length: 105mm/140mm with bearing tip



# Attachments of Cranial Motor

## Perforator Adaptor

- Code: C1910
- Output Speed: 0~1,500 RPM
- Output Torque: > 750mNm
- Body Length: 125mm



# Attachments of Cranial Motor

## Craniotome Adaptor

- Code: C1920
- Output Speed: **0~40,000 RPM**
- Output Torque: **> 25mNm**
- Material: Titanium
- Body Length: 105mm
- Max Cutting Thickness: 18mm





# Attachments of High Speed Motor



- Standard Drill Handpiece
- Micro Drill Handpiece
- Endoscopy Drill Handpiece
- Saw

## Attachments of High Speed Motor



### Standard Straight Grinding Handpiece

- Code: C1936-45
  - Working Length: 45mm
  - OD:  $\varphi$ 6.5mm
  - 2.35mm Drill Bit
- Code: C1936-65
  - Working Length: 65mm
  - OD:  $\varphi$ 6.5mm
  - 2.35mm Drill Bit
- Code: C1936-85
  - Working Length: 85mm
  - OD:  $\varphi$ 6.5mm
  - 2.35mm Drill Bit

# Attachments of High Speed Motor

## Standard Angled Grinding Handpiece



- Code: C1946-45
  - Working Length: 45mm
  - OD:  $\varphi$ 6.5mm
  - 2.35mm Drill Bit



- Code: C1946-65
  - Working Length: 65mm
  - OD:  $\varphi$ 6.5mm
  - 2.35mm Drill Bit



- Code: C1946-85
  - Working Length: 85mm
  - OD:  $\varphi$ 6.5mm
  - 2.35mm Drill Bit

# Attachments of High Speed Motor

## Micro Straight Grinding Handpiece



- Code: C1935-88
  - Working Length: 88mm
  - OD:  $\varphi$ 5mm
  - 2mm Drill Bit



- Code: C1935-108
  - Working Length: 108mm
  - OD:  $\varphi$ 5mm
  - 2mm Drill Bit



- Code: C1935-128
  - Working Length: 128mm
  - OD:  $\varphi$ 5mm
  - 2mm Drill Bit

# Attachments of High Speed Motor

## Micro Angled Grinding Handpiece



- Code: C1945-88
  - Working Length: 88mm
  - OD:  $\varphi$ 5mm
  - 2mm Drill Bit



- Code: C1945-108
  - Working Length: 108mm
  - OD:  $\varphi$ 5mm
  - 2mm Drill Bit



- Code: C1945-128
  - Working Length: 128mm
  - OD:  $\varphi$ 5mm
  - 2mm Drill Bit

# Attachments of High Speed Motor

## Endoscopy Drill Handpiece

- Code: C1933-300
  - Working Speed: 0~20,000 RPM
  - Working Length: 300mm



# Attachments of High Speed Motor

## Oscillating Saw

- Code: C1950
  - Working Speed: 0~20,000 TPM



## Reciprocating Saw

- Code: C1960
  - Working Speed: 0~20,000 TPM



# Consumable

- Drill Bit
- Craniotome
- Perforator
- Dura Guard
- Saw Blade



LENGTH Dia	20	45	65	85	88	108	128
Φ1MM	C21-20-1	C21-45-1	C21-65-1	C21-85-1	C21-88-1	C21-108-1	C21-128-1
Φ2MM	C21-20-2	C21-45-2	C21-65-2	C21-85-2	C21-88-2	C21-108-2	C21-128-2
Φ3MM	C21-20-3	C21-45-3	C21-65-3	C21-85-3	C21-88-3	C21-108-3	C21-128-3
Φ4MM	C21-20-4	C21-45-4	C21-65-4	C21-85-4	C21-88-4	C21-108-4	C21-128-4
Φ5MM	C21-20-5	C21-45-5	C21-65-5	C21-85-5	C21-88-5	C21-108-5	C21-128-5
Φ6MM	C21-20-6	C21-45-6	C21-65-6	C21-85-6	C21-88-6	C21-108-6	C21-128-6



LENGTH Dia	20	45	65	85	88	108	128
Φ1MM	C22-20-1	C22-45-1	C22-65-1	C22-85-1	C22-88-1	C22-108-1	C22-128-1
Φ2MM	C22-20-2	C22-45-2	C22-65-2	C22-85-2	C22-88-2	C22-108-2	C22-128-2
Φ3MM	C22-20-3	C22-45-3	C22-65-3	C22-85-3	C22-88-3	C22-108-3	C22-128-3
Φ4MM	C22-20-4	C22-45-4	C22-65-4	C22-85-4	C22-88-4	C22-108-4	C22-128-4
Φ5MM	C22-20-5	C22-45-5	C22-65-5	C22-85-5	C22-88-5	C22-108-5	C22-128-5
Φ6MM	C22-20-6	C22-45-6	C22-65-6	C22-85-6	C22-88-6	C22-108-6	C22-128-6



# Consumable



Craniotome

- Code: C24
  - Standard



Perforator

- Code: C23-7
  - $\varphi$ 7mm (7/11)
- Code: C23-9
  - $\varphi$ 9mm (9/13)
- Code: C23-11
  - $\varphi$ 11mm (11/14)



Craniotome

- Code: C25-1
  - Turnable
- Code: C5-2
  - Fixed



# ACCESSORIES



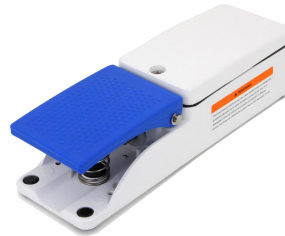
Mobile Trolley

- Medical Silent Castor



Foot Switch

- Code: C2002
- Dual Pedal
- IPX68



Foot Switch

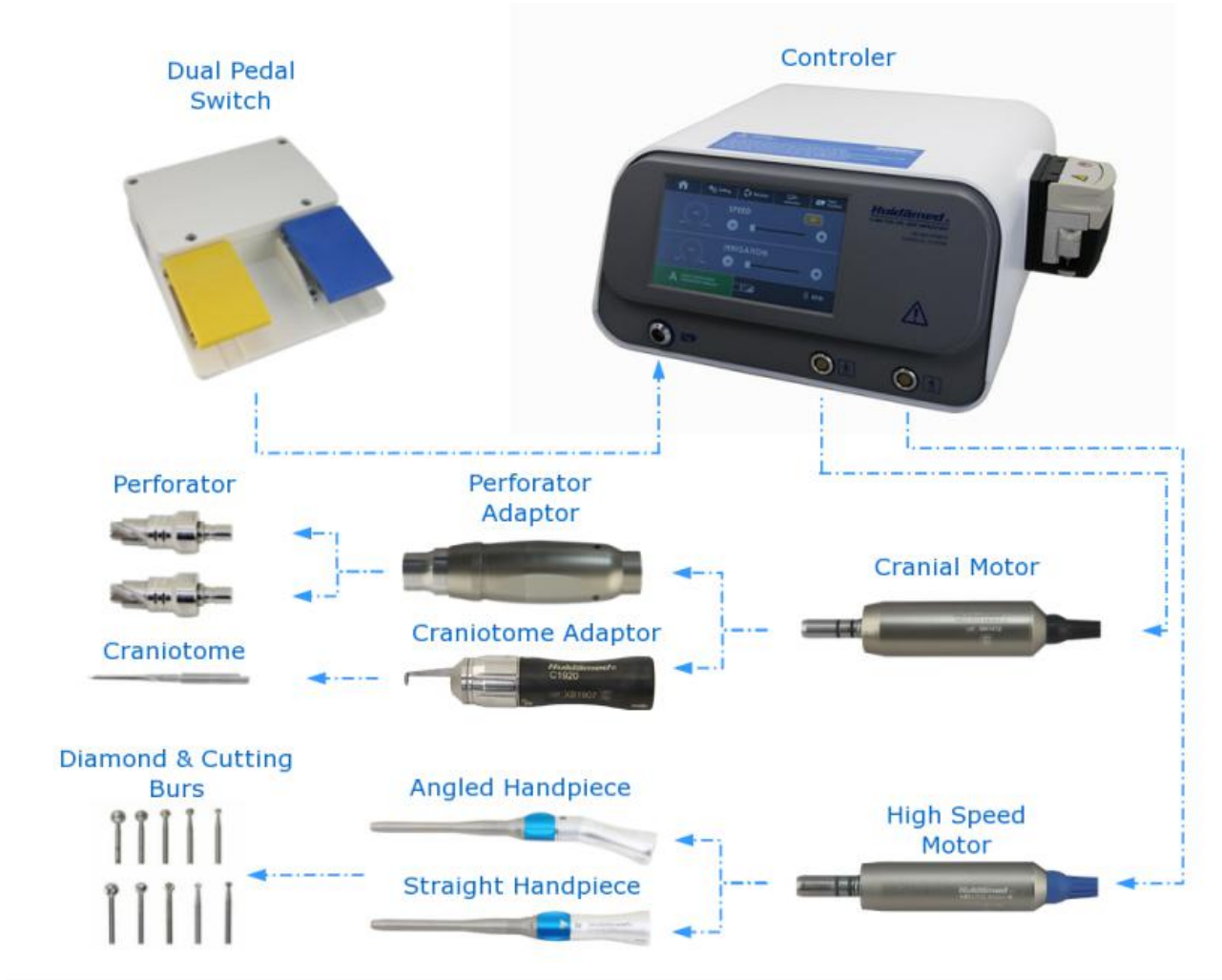
- Code: C2001
- Dual Pedal
- IPX68



Sterilizing Case

- Code: C2003
- Aluminum

# BASICA NEURO SET





**CHANGZHOU HUIDA MEDICAL INSTRUMENT CO., LTD**

Add: NO.1 Shijiapeng Road, Jincheng Town Industrial Park, Jintan, Jiangsu Province, China  
Tel: +86 519 82857858 Fax: +86 519 82857868  
Email: [info@huidamed.com](mailto:info@huidamed.com)  
[www.huidamed.com](http://www.huidamed.com)

***Huidamed***®  
For Neuro, For More